



Optimizing eDiscovery with AI

How Legal ISVs Can Reduce Development
Times and Get to Market Faster



ESI, MEET AI.

Generative AI and other innovative technologies continue to transform the way we do business.

Organizations are searching for opportunities to gain efficiencies, integrating AI capabilities into their business processes.

In the legal industry, AI and automation make it easier to handle large amounts of data and digitized documents during the litigation process. In-house legal teams manually sort through documents, emails, videos, and other forms of content. This process is time-consuming and prone to errors.

By enhancing their existing ECM solutions with AI, legal tech ISVs can make the process of finding, reviewing, summarizing, and displaying information quick and easy, all from within the same application.



The volume of electronically stored information (ESI) within the global legal technology market is expected to double in size in 2024 [Gartner Research](#)

Understanding eDiscovery

eDiscovery is a critical process for law firms and legal departments. The goal is to conduct a balanced, proportionate discovery process that fulfills legal obligations while minimizing unnecessary costs and effort.

The eDiscovery Process

- **Identification** Locating data sources that contain case-relevant ESI
- **Preservation** Preventing the destruction of ESI during the normal course of business
- **Collection** Gathering ESI from identified sources
- **Processing** Examining ESI and filtering for privileged, confidential, or non-responsive information
- **Review** Examining processed ESI to assess relevance and privilege
- **Production** Providing responsive, non-privileged ESI to other relevant parties



The Role of AI in eDiscovery

AI is transforming the eDiscovery process by automating manual tasks through natural language processing and machine learning. AI tools help reduce document review times using conceptual tagging, categorization, and similarity analysis.

Machine learning algorithms also power advanced search and analytics, revealing unknown relationships within document sets.

Most Fortune 500 companies spend \$5-10M annually on eDiscovery
Fortune Business Insights

AI can:

- Optimize eDiscovery workflows and intuitively package analytical findings
- Unlock new levels of insight for legal teams
- Streamline processes for application users while freeing up resources
- Boost productivity and lead to more effective investigation and litigation strategies

eDiscovery's Biggest Challenges

Legal ISVs are preparing to help their customers address a variety of critical challenges including:



Data Management

Law firms grapple with managing data effectively. Data silos isolate information to specific departments, systems, and locations, making it difficult for organizations to access and view data.

Gathering data from disparate sources also requires significant time and effort. Without a single, centralized Enterprise Content Management (ECM) system, employees spend valuable time searching through systems and repositories.



Data Compliance and Risk

Law firms and other professional service organizations must protect Personally Identifiable Information (PII) to comply with regional and local data privacy regulations. ISVs that serve these industries must provide robust security measures and compliance features to help clients meet these evolving regulatory standards. Failure to safeguard PII can lead to significant legal and financial risks.



Cost and Resource Management

eDiscovery workloads put a significant strain on law firms and legal services organizations. Manual document review processes are no longer sustainable, as teams struggle to process ever-increasing volumes of data with limited services.

Organizations must find ways to automate repetitive tasks and enhance workforce productivity. This may include integrating advanced document processing capabilities directly into their technology platforms.



Finding the Right eDiscovery Solution

Choosing the right document processing solution to integrate into existing eDiscovery systems and fit organizational needs can be time-consuming and costly.

The right eDiscovery technology partner should boost efficiency and productivity while providing the robust controls and safeguards needed to meet the legal industry's rigorous standards.

HOW ISVs CAN ADDRESS



Consider scalable solutions that enable users to open, view, and mark multiple file formats within a **centralized application**.



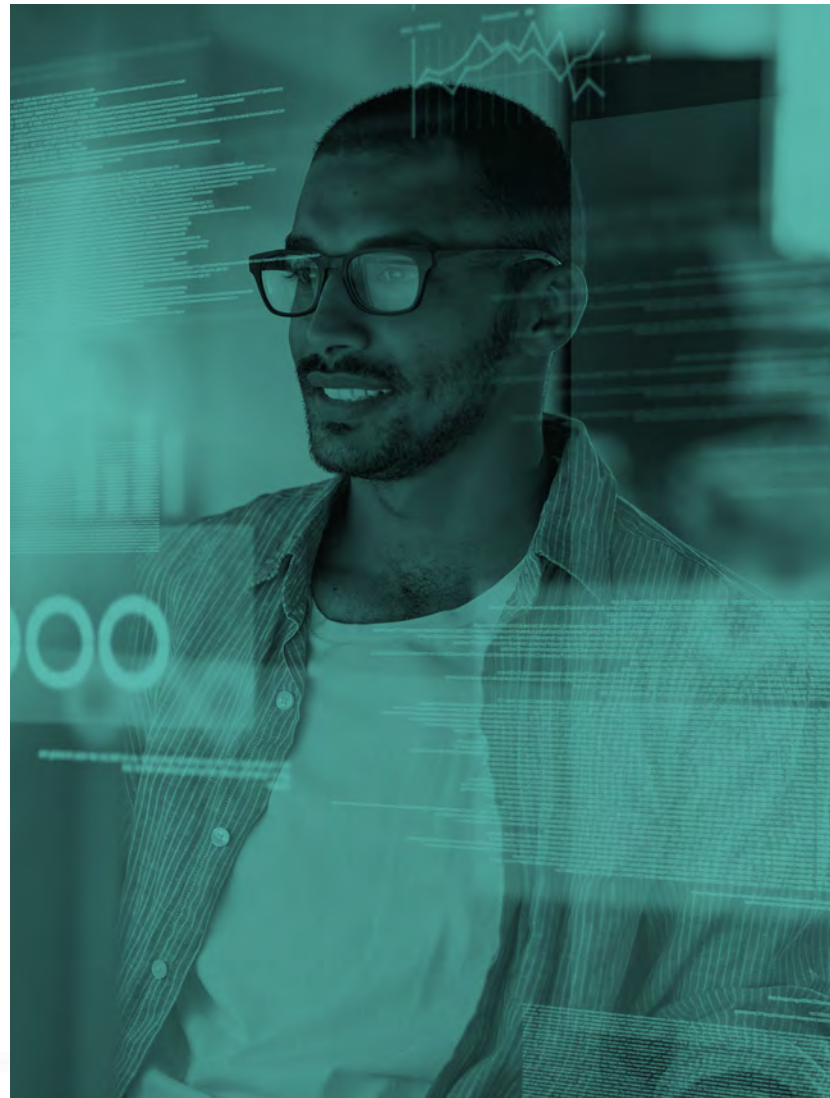
Offer **advanced compliance features** in their applications and proactively address data security and compliance concerns.



Empower customers to do more with less, enabling end-users to **streamline workflows** and focus on high-value activities.



Integrate document processing solutions that prioritize data security while **controlling eDiscovery costs**.



Global data volume is expected to exceed 221,000 exabytes by 2026 [AIIM International](#)

THESE CHALLENGES

Why Legal Tech ISVs Turn to **PrizmDoc®** to Take Their Applications to the Next Level

PrizmDoc's innovative AI-powered features revolutionize how organizations navigate the eDiscovery landscape. Integrating IBM's watsonx.ai technology, PrizmDoc reduces development times for ISVs and transforms the document management and processing user experience.

- Quickly integrate document processing features into your software.
- Save expenses by adopting a proven API-based solution for document viewing and processing.
- Keep sensitive documents within your secure application environment.
- Maintain a cohesive and efficient user experience across your branded applications.

By offering these innovative document management features, ISVs can differentiate their solutions, accelerate product roadmaps, and deliver enhanced value for their customers.

PrizmDoc's AI Features



Auto Summarization

The auto-summarization feature provides concise overviews of key document content, allowing users to quickly comprehend the most salient information without exhaustive manual reviews.

Teams can collaborate more efficiently, with shared access to the most up-to-date document highlights. They can focus their efforts on high-value strategic analysis and case progression to drive better outcomes for their clients.



Auto Tagging and Classification

Leveraging advanced natural language processing algorithms, this feature automatically organizes case files, pleadings, and other crucial documents—all while preserving metadata and enabling seamless search and retrieval.

Legal teams can easily track the provenance and lineage of information, meeting stringent disclosure requirements and reducing the risk of errors or oversight.



Document Q&A

Rather than dedicating substantial team hours to sifting through case materials, with Document Q&A, legal professionals can quickly identify the most crucial facts and insights.

The feature analyzes documents based on user queries to reduce administrative overhead and allow teams to make more informed decisions.



PII Detection and Redaction

PrizmDoc's advanced AI algorithms automatically locate and highlight protected data types including names, social security numbers, and birth dates. Legal teams can efficiently review and redact sensitive information, maintaining robust oversight and control of their documents.

With advanced PII detection and redaction capabilities, ISVs can position themselves as indispensable partners while alleviating client concerns about data privacy and risk management.



SEE

prizmdoc[®]

IN ACTION

Ready to revolutionize your document management solutions and propel your customers' businesses toward greater efficiency and security?

Reach out to learn more and [schedule a demo](#) today!

www.accusoft.com

