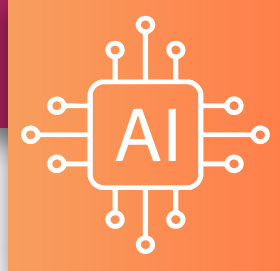
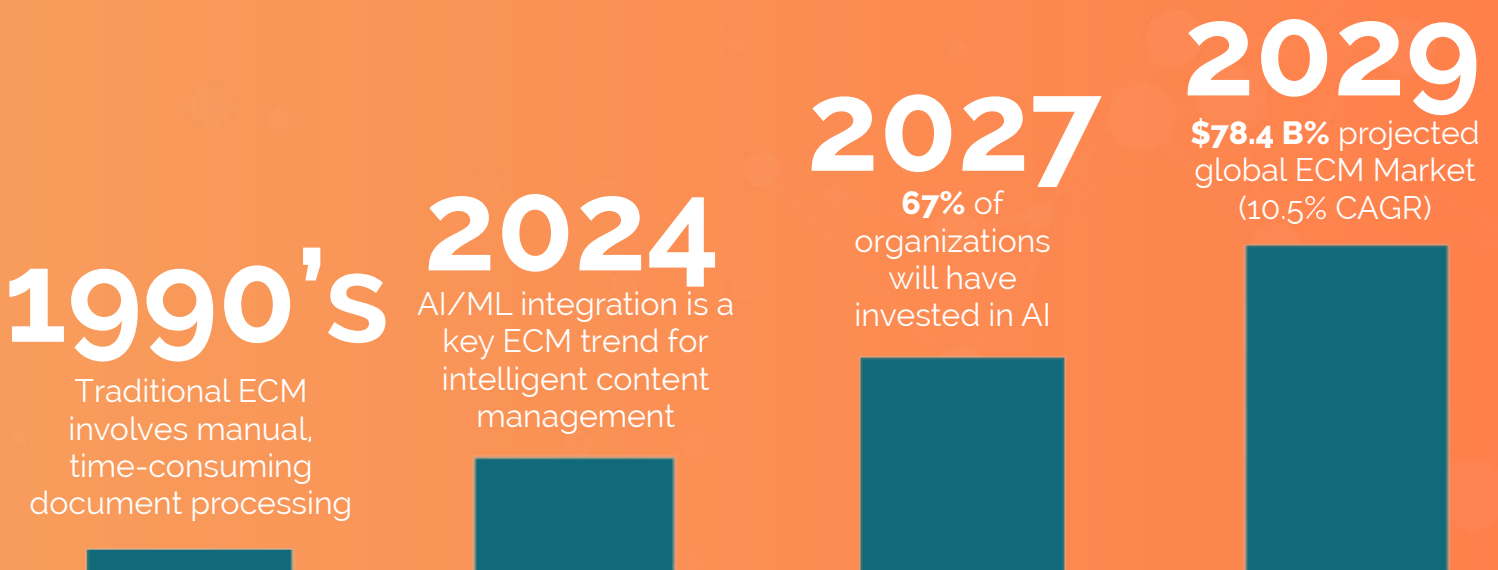


TRANSFORMING ENTERPRISE CONTENT MANAGEMENT WITH



As the future of enterprise content management (ECM) unfolds, it is clear that the adoption of cutting-edge AI technologies is not merely an option, but a necessity for ISVs and developers seeking to maintain a competitive edge. Discover the profound impact of AI on ECM and the extraordinary possibilities it presents for organizations across industries.

THE EVOLUTION AND FUTURE OF ECM



HOW TO OPTIMIZE ECM WORKFLOWS WITH AI



Deliver more efficient solutions to customers at scale



Automate tagging, categorization, search, summarization



Leverage NLP to improve accuracy and reduce errors

USING KEY AI CAPABILITIES



Effective Tagging & Categorization
Automate assigning tags/categories



Scaling with Data Volume
Use NLP to manage structured/unstructured data

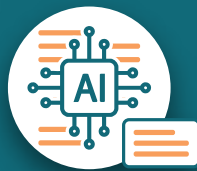


Building Efficiency
Extract highlights /answers quickly with summarization and Q&A

WITH PRIZMDOC'S AI-POWERED FEATURES



Auto Tagging & Classification
Automatically organize documents for easy search



Auto Summarization
Generate concise summaries capturing key points



Document Q&A
Retrieve precise answers from documents via chat interface



PII Detection & Redaction
Identify and redact personal data for privacy compliance

THE FUTURE OF ECM IN THE AI ERA

Continued growth in AI capabilities predicted to disrupt industries

Deepening AI/ML integration for better understanding of user needs

Use case expansion via multimodal models for text, image, mixed data

Change management key for aligning tools, talent, skills with business goals

AI to streamline routine work, allowing focus on higher-level human tasks

LEARN MORE ABOUT PRIZMDOC

For more information about how PrizmDoc can help your application, contact us at: sales@accusoft.com



www.accusoft.com

